



Art-work by Keith Haring

Dry Sandford Primary School

Antibullying Policy for Younger People

Positive relationships are a really important part of Dry Sandford School. We aim for there to be good relationships in the school so that bullying is unlikely to happen and the school is happy and peaceful.

In school we do lessons about ourselves and relationships, which help us in later life. (PHSCER)

ANTIBULLYING/ HOPE NOT HATE GROUP CREATED THIS VISION FOR OUR SCHOOL

We wish to create a restorative culture where there is/are: **Happiness everywhere.**

Opportunity to communicate with each other about different problems or worries in a range of different ways.

Peaceful resolution of difficulties.

Empathy for everyone and a feeling that our differences are valued.

Never a time when anyone feels lonely or feels left out.

Overcoming difficulties is what we do- and we try to avoid falling out.

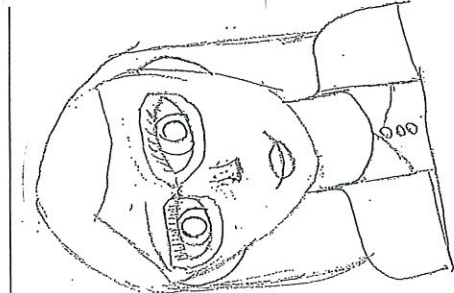
Total belief in equal rights.

Helpful adults (all of the adults but especially ELSAs) who give us opportunity to talk about our worries.

Attention given to everyone for the right reasons.

Thinking about others as well as ourselves.

Everyone follows a restorative approach so we are all friends together.

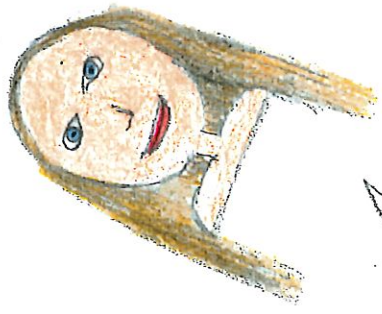
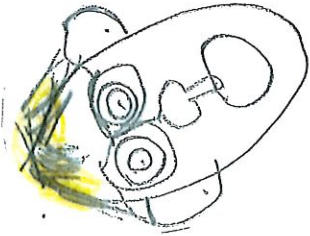


name-calling,

Bullying is:

making rumours

kicking



Hitting

telling on someone for something they haven't done



being mean about what someone wears

stealing (and not giving back)



and lots of other things which make another person feel bad about themselves.

ALWAYS USE KIND WORDS AND ACTS
Created by Year 6 children

2021-22.

Bullying is when a child or adult is purposefully mean to someone else. It isn't the same as just falling out with a friend and saying something you regret- it is behaviour which is repeated over and over again even when we know that it is hurting someone.



Sometimes bullying is directed at minority groups – examples of this are racism, bullying aimed at LGBT groups and those who are disabled.

What does that word mean?

Am I allowed to say that?

You might be worried that a word you heard is unkind or rude. You might just not know what it means! Here are some words and their meanings to help you out. These groups of people are sometimes referred to as LGBT. **Gay** means a man who loves men rather than women. A gay man might have a boyfriend or a husband. Gay is not a rude word or an insult, and we wouldn't use it in an unkind way.

Lesbian means a woman who loves women rather than men. A lesbian might have a girlfriend or a wife. Lesbian is not a rude word or an insult, and we wouldn't use it in an unkind way.

Bi, or **bisexual** means someone who loves men and women. A bi person might have a girlfriend, a boyfriend, a husband or a wife. Bi is not a rude word or an insult.

Trans, or **transgender** means someone whose gender is different from what they were given at birth. Trans people might change their name or their pronouns (the words like he or she that we use to describe people), and wear clothes that match their gender. Being trans is not rude or an insult. It would be rude to call a trans person the wrong name or pronouns.

There are some words that are too rude and offensive to use in school.

You might hear people talk about swear words like "the F word" or "the S word". If you're not sure what these words are, you can ask a trusted adult – but we would never use those words at school.

There are other words like swear words that are so offensive we would never use them anywhere. You might hear people talk about "the N word". This is a word that is extremely racist and offensive to black people. This word is never acceptable, in or out of school. If you're not sure what the word is you can ask a trusted adult.

If there is any behaviour in school which has upset someone then:

1. A member of staff is made aware- it is really important that you tell someone at school if you are upset. If not then tell someone- anyone- so that they can help you.
2. The staff member then sees each person involved separately to give them the chance to talk about the situation.
3. The staff member then gets the people together to talk through what has happened. They all talk about how they feel, what they were thinking when it happened and what they need to feel better.
4. Everyone who has been affected talks about how the situation can be restored. Sometimes this takes time because feelings can be very big and strong.
5. The situation is monitored by staff until everyone involved feels ok again.
6. We should have learned a lot from the situation so that we are very clear about how we can avoid the situation again.
7. If bullying occurs- the events happen again- and someone is being deliberately hurtful, they may be asked to play in a separate space until the situation is properly resolved. This doesn't happen very often.
8. Our aim is to help people to become really kind grown-ups. This means that we all need to practice kind behaviour. It also means that we try to help everyone to be happy. We have noticed...
 - ❖ Happy people are generally kind;
 - ❖ If needs are met then the school is a peaceful place;
 - ❖ Sadly, people who are hurting often hurt other people.

We all try to make Dry Sandford School a supportive, caring and safe place without fear of being bullied.



Bullying is something that no-one wants.